

# EARLY LEARNING COALITION OF PINELLAS COUNTY

## SERVICE DELIVERY MODEL RECOMMENDATION



April 8, 2010

# Background

- Coalitions were created per Chapter 411 to design, operate and manage the School Readiness program. (VPK was added later)
- Coalitions are required to submit a 3-year plan to the funding agency, AWI, clearly outlining the service delivery plans.
- AWI (funder) is responsible for monitoring each Coalition to determine compliance with their own Plan.

# Background

- Coalitions may choose to contract out/out source all services.
- Coalitions may provide all services in-house.
- Coalitions may chose a combination of the above.

## Coalition Comparison

- 14 provide all services in-house
- 7 contract out most services
- 10 do a little of both

---

31 Unique Models



April 8, 2010

# Background

The Coalition is accountable for the compliance and effectiveness of all services regardless of the service delivery model.

April 8, 2010

# Current Service Delivery Model

## Early Learning Coalition

### Direct Services

- Professional Development
- VPK Provider Certification
- Inclusion – Warm Line
- Program for Inclusive Early Care and Education
- Developmental Screening – Referral
- VPK Provider Certification & Assessment

## Pinellas County Schools

- Florida First Start - Quality

## Pinellas County Health Department

- Screening Eyes and Ears of Kids (S.E.E.K.) - Quality

## Coordinated Child Care of Pinellas

- SR Provider Certification & Compliance
- Quality Counts
- Infant Toddler Program
- Developmental Screening
- Child Eligibility  
Child Care Resource & Referral  
Provider Reimbursement

## Pinellas Public Library Cooperative

- Born to Read

April 8, 2010

# Current Coalition Staffing

|                |                 |
|----------------|-----------------|
| Administration | Direct Services |
| 6 FTE          | 7 FTE           |

\*All FTEs were established with Board approval.

April 8, 2010

# Core Services

- Child Eligibility
- Waitlist Management
- Provider Reimbursement
- Child Care Resource & Referral
- IT Support (Primarily EFS database)

*All services are currently provided by CCC.*

# Quality Services

- Quality Counts (CCC)
- Infant Toddler Program (CCC)
- School Readiness Provider Certification & Compliance (CCC)
- Developmental Screening (CCC/ELC)
- VPK Provider Certification & Compliance (ELC)
- Professional Development (ELC)
- Florida First Start (PCSB)
- Born to Read (PPLC)
- SEEK (PinHD)

April 8, 2010

# Service Delivery Options

## NOT RECOMMENDED

- Negotiate contract for all services.  
(Excludes Developmental Screening).
- Transition all services in-house.

# Service Delivery Options

## RECOMMENDED OPTION

3. Negotiate contract for Core Services only.  
Transition Quality Services in-house\* July 1, 2010.

| Professional Development   | Child Progress  | Program Assessment   |
|--|---|--|
| <ul style="list-style-type: none"><li>● Training</li><li>● Quality Counts</li><li>● Infant Toddler Program</li></ul> | <ul style="list-style-type: none"><li>● Developmental Screening</li><li>● Intervention Services</li><li>● Pre-Post Assessment</li></ul> | <ul style="list-style-type: none"><li>● SR Provider Certification</li><li>● SR Program Assessment</li><li>● VPK Provider Certification</li></ul> |

\*Excludes: Florida First Start, SEEK, Born to Read

April 8, 2010

# Rationale

1. Preserves one-stop shopping for families.
2. Provides unified system for provider support services.
3. Quality Assurance
4. AWI Early Learning Partnership Initiatives
5. Maintains and enhances existing quality at reduced cost.

# Rationale cont...

## 6. Cost Efficiencies

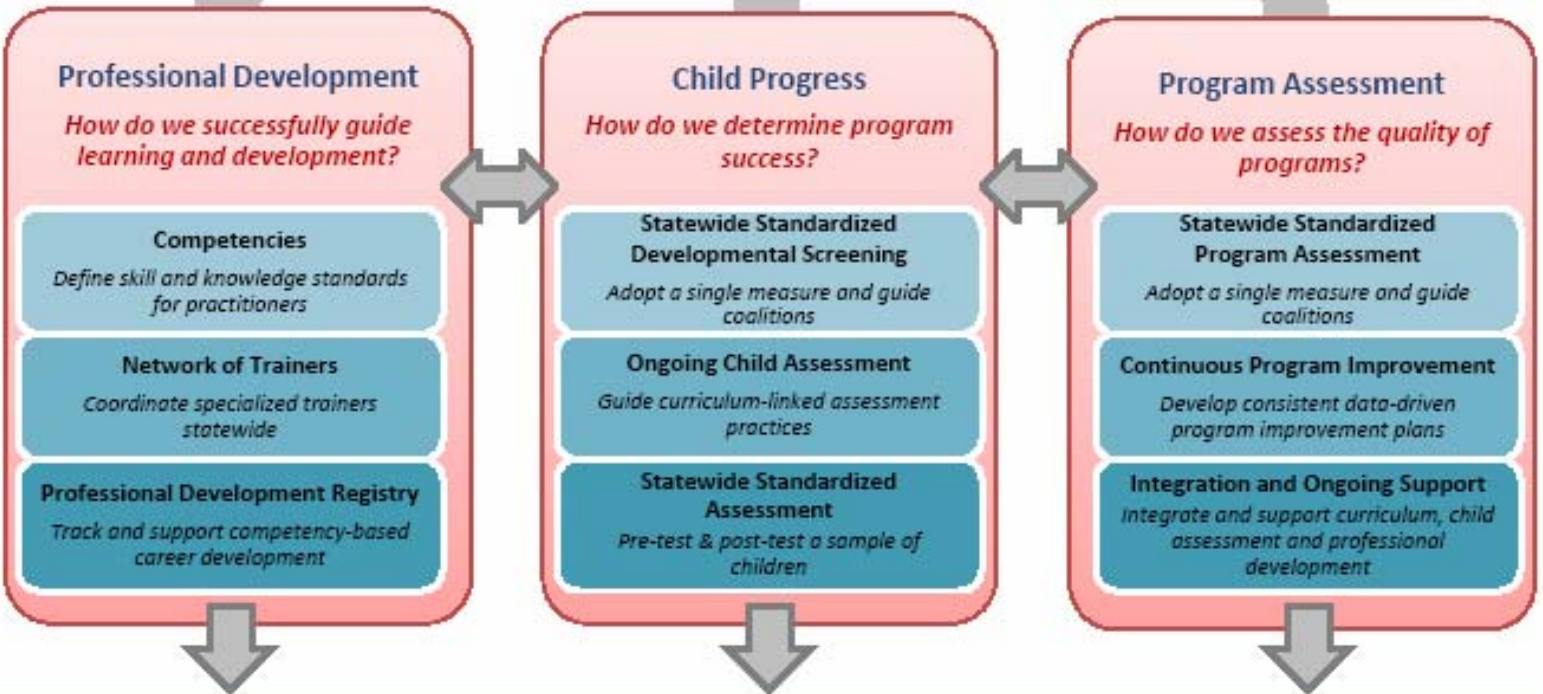
- Utilize existing ELC senior management
- Minimize mid-management level
- Utilization of contracted workforce where possible
- Cross-train staff to maximize efficiencies
- CCC significantly reduces admin & non-direct costs.

Serves approximately 440 additional  
School Readiness Children.



# Early Learning Partners Initiative

*Building Strong Sustainable Programs*



## Early Learning Information System (ELIS)



*Note: Projects described here are funded through Federal ARRA funds.*

# Professional Development

## New ELC Services

- Realignment of services in accordance with AWI Early Learning Partnership Initiative
- Quality Counts
- Infant Toddler Program

## Existing ELC Services

- Training
- CEU Administration
- Step-Up Scholarships

April 8, 2010

# Developmental Services

## New ELC Services

- Developmental Screening- Administration
- Intervention Services
- *Pre-Post Assessment*

## Existing ELC Services

- Developmental Screening Referral-Navigator

# Program Assessment

## New ELC Services

- School Readiness Provider Certification
- School Readiness Provider Monitoring
- School Readiness Program Assessment
  - Details to be determined by AWI

## Existing ELC Services

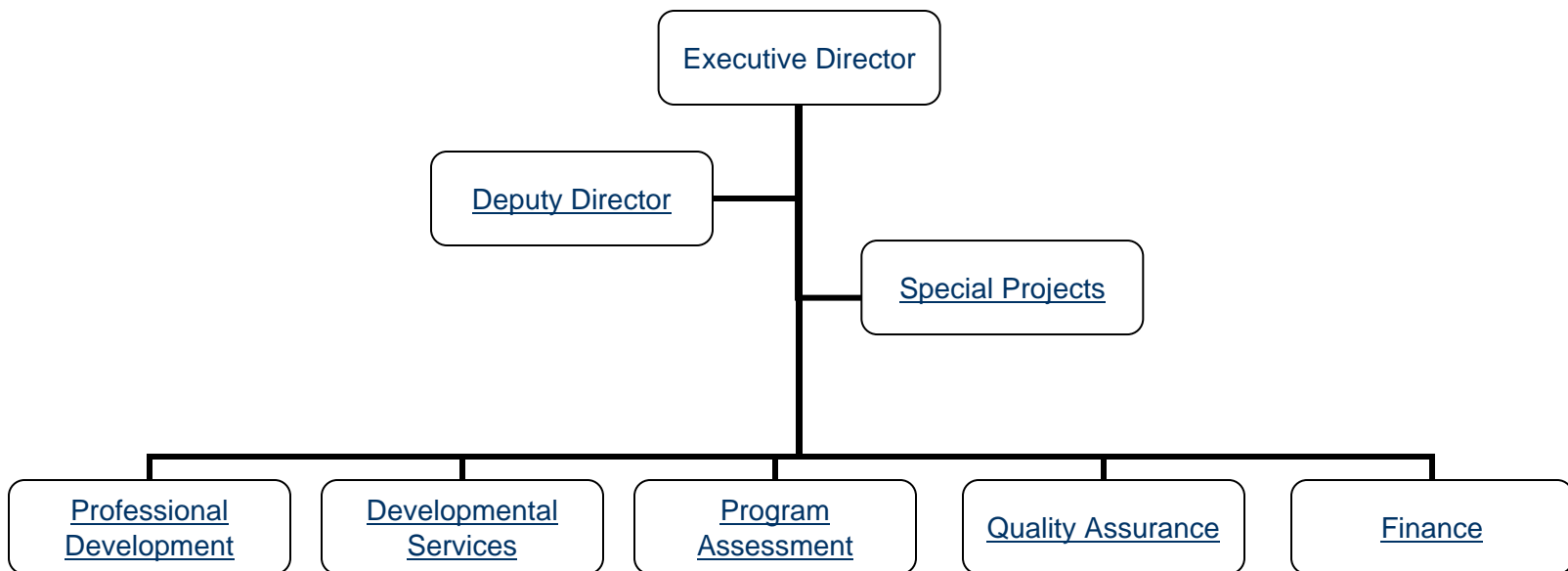
- VPK Provider Certification & Monitoring

# Quality Assurance Plan

- Quality Assurance Components
  - Results Accountability methodology
    - Based on the work of H. Daniels Duncan, Mark Friedman and the Results Leadership Group
    - Identifies target populations
    - Begins where you want the populations to “end up” and uses continuous improvement of the processes and measurement to achieve the desired results.
  - Agency for Workforce Innovation requirements in addition to federal and state statutes, local policy and the Coalition Plan

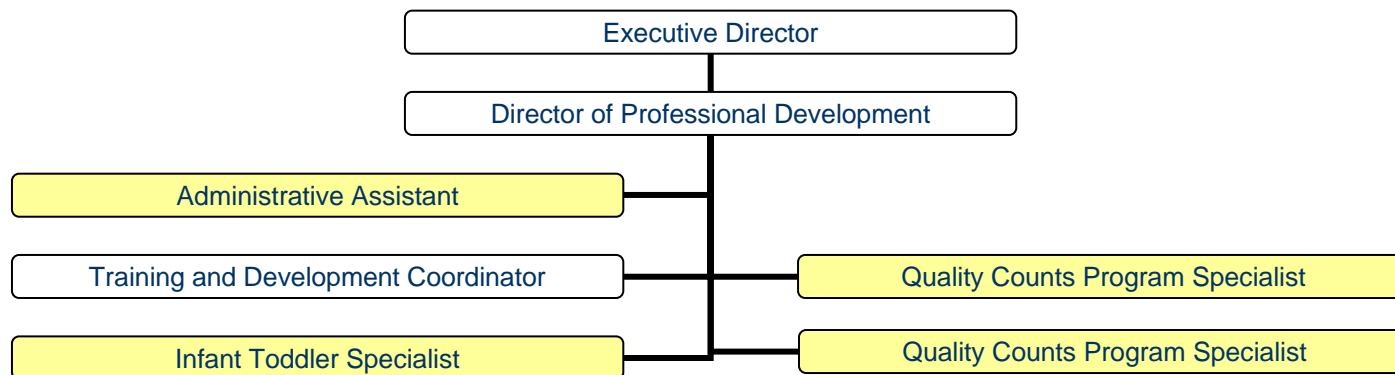
April 8, 2010

# Department Organization



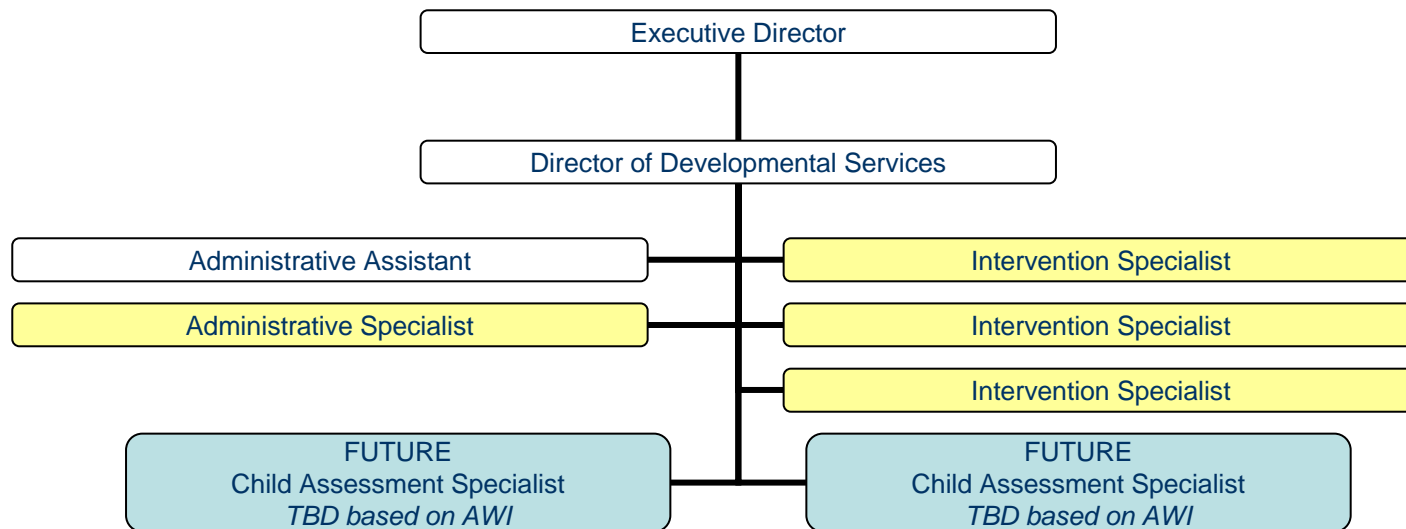
April 8, 2010

# Professional Development Department



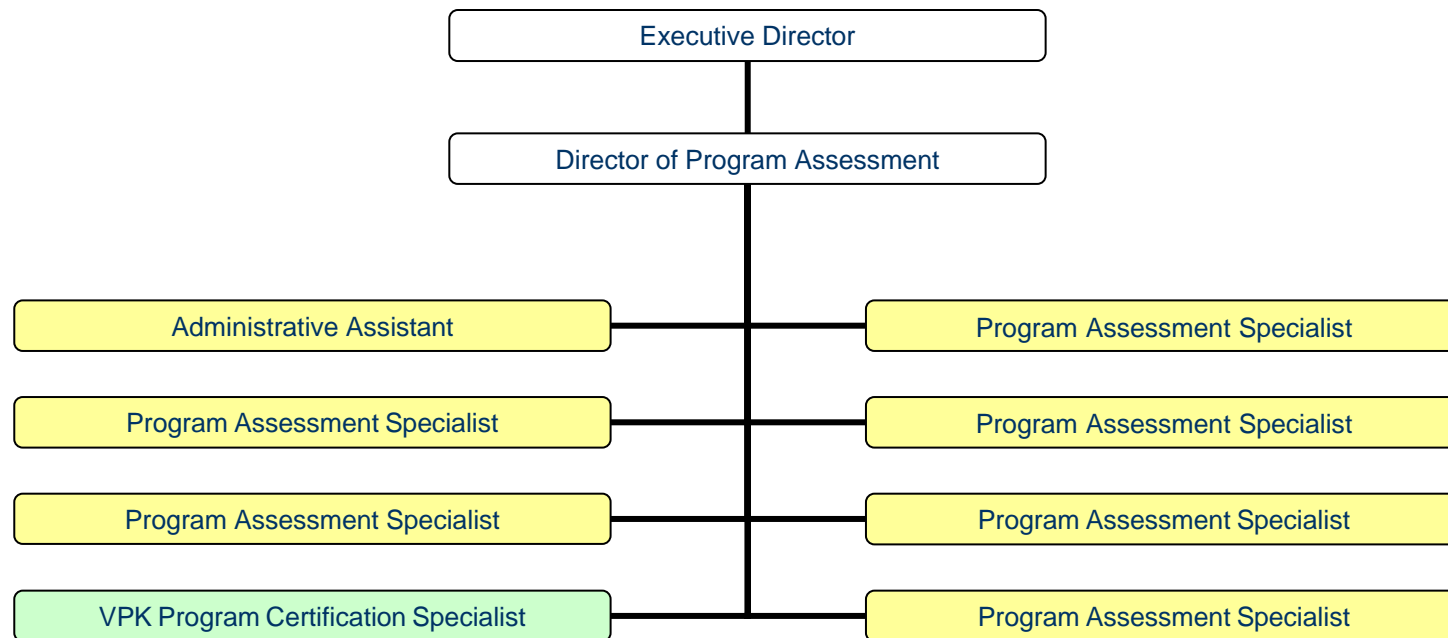
April 8, 2010

# Developmental Services Department



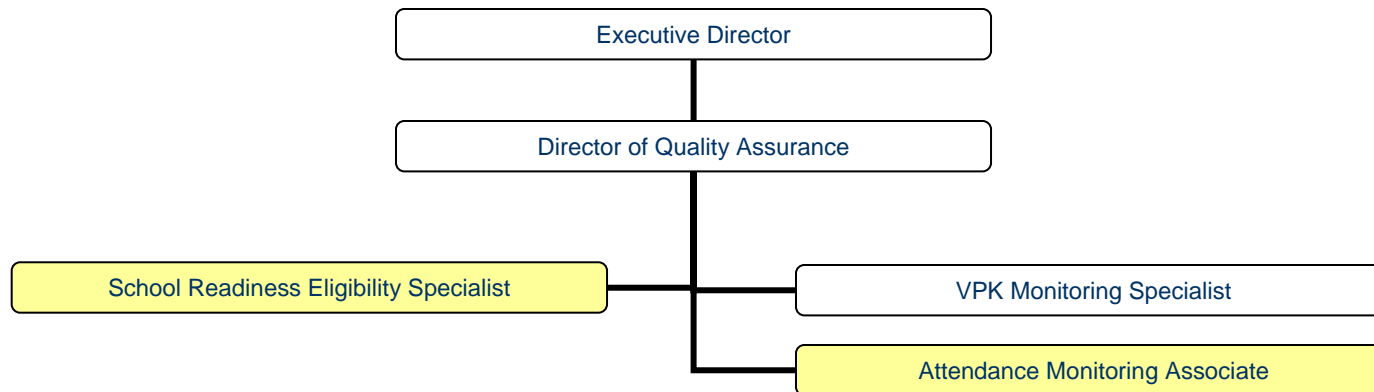
April 8, 2010

# Program Assessment Department



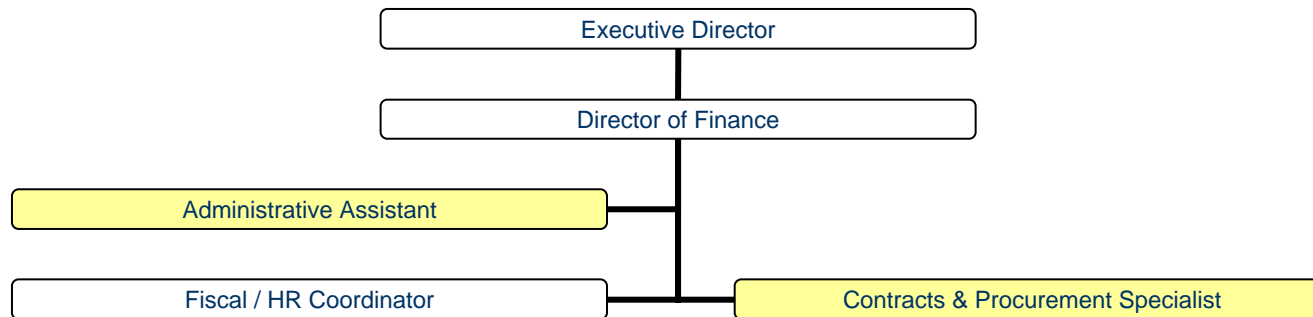
April 8, 2010

# Quality Assurance Department



April 8, 2010

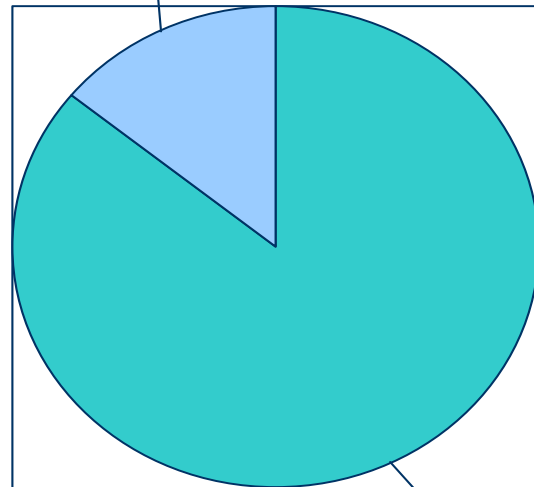
# Finance Department



April 8, 2010

# Proposed FY 2010-2011 Budget Summary SR & VPK

\$6,763,891



\$38,340,768

■ Direct Child Care  
(Slots) 85.82%

■ Other\* 14.18%

\*Other

Administration 4.34%

Eligibility & Support 4.91%

Quality Services 4.93%

April 8, 2010

# Transition Expenses

- Phone System \$20,000
- Computer Equipment \$15,000
- Furniture \$14,500

April 8, 2010

# Facility Expansion

Location: 5675 Rio Vista Dr. Clearwater  
Lease: 69 Months  
Square Feet: 4,570  
Price: Year 1 \$5.20/ft                      Common Area \$4.22/ft  
          Remaining \$10.40/ft                Common Area \$4.22/ft  
Accommodations: 5 Offices (1 furnished)  
                          16 Work Stations cubes (12 included)  
                          1 Conf Room (furnished)  
                          1 Resource Room

April 8, 2010

# Transition Timeline

## Tentative Timeline

- April/May 2010 Advertise ELC Positions\*  
Conduct Interviews and Select Applicants
- July 1, 2010 Execute 1 year contract with CCC for Core Services
- July 1, 2010 Extend Current Contract through October 1, 2010 if necessary
- July 2010 Transition Designated Quality Services to ELC
- July 2010 Access to new office space

\*New positions will be opened to CCC staff before the general public.

April 8, 2010